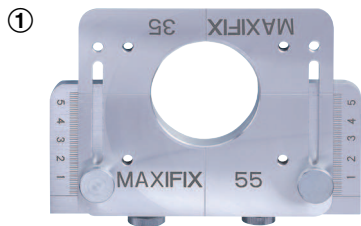
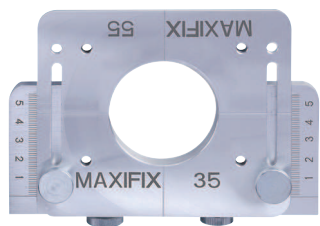


Unitool Maxi Drilling jig

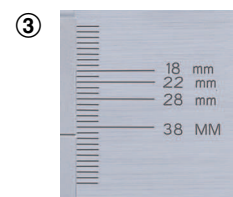
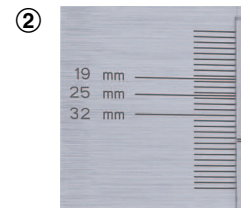
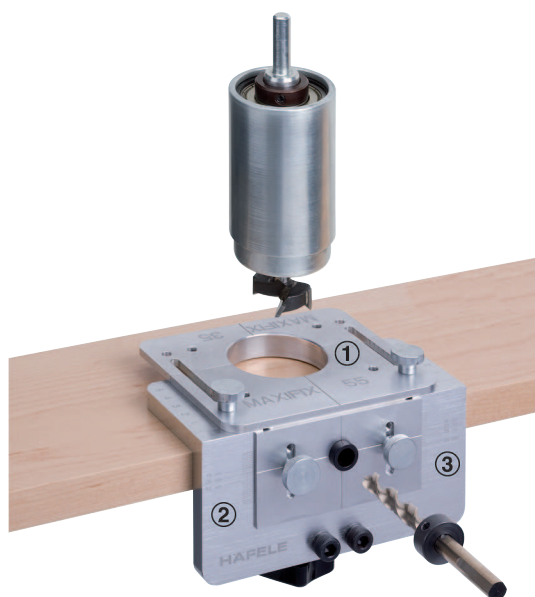
For Maxifix RTA connector, set in aluminium case



Drilling position for connector housings
(drilling dimension B = 55 mm)



Drilling position for connector housings
(drilling dimension B = 35 mm)



Scale corresponds to
panel thickness

2

- Area of application: For accurate and rapid drilling of the Maxifix RTA connector range, **optional:** Surface drillings up to Ø 40 mm, e.g. for drill holes for concealed hinges (distance to front edge continuously adjustable)
- Version: **Drilling jig:** The drilling position is adjusted without tools using knurled nuts, the supplied Allen key is required for adjusting drilling depth and changing drill bits, **depth gauge:** Ball bearing mounted and therefore wear and tear free, for drill bits with Ø 10 mm shank, for drill bits with one flat side for clamping (total length 57 mm), **drill guides:** With hardened steel inserts, surface drilling for drilling dimension B 35 and 55 mm, edge drilling for dimension A 18 – 40 mm
- For panel thickness:
- Material: Aluminium, depth gauge and drilling sleeves: Steel
- Finish: Anodized/galvanized

Supplied with

Drilling jig

- 1 Basic jig with tensioning screw
- 1 Drill guide for surface drillings, 1 depth gauge, 2 knurled nuts
- 1 Drill guide for edge drillings, 1 drilling sleeve for 10 mm drill bit, 2 knurled nuts
- 10 mm HSS twist drill bit, 1 stop ring

Depth gauge

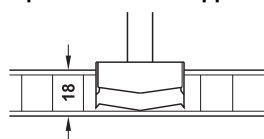
- 1 Basic jig, with ball bearings, for drill bits with Ø 10 mm shank
- 35 mm HM multi-spur drill bit with one flat side for clamping, 1 stop ring
- 1 SW 2.5/3 Allen key

Aluminium case

	Cat. No.
Unitool Maxi drilling jig	001.25.101

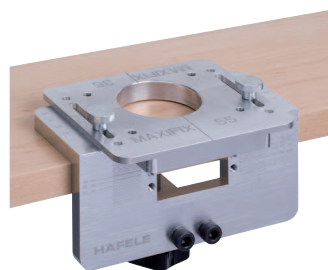
Packing: 1 piece

Optional areas of application



Drillings for panel thickness 18 mm, with HM multi-spur drill bit **without** centering tip.

The use on solid wood and MDF boards is not recommended due to severe frictional heat build-up of the multi-spur drill bit.



Surface drillings up to Ø 40 mm, edge distance continuously adjustable, e.g. drill holes for concealed hinges.