

Pressomat Drawer press

For rapid assembly of Moovit drawers



The benefits of using Pressomat

- The clamping device of the Pressomat holds the drawer sides, base and rear panel in position.
- Both hands are free to operate mounting tools, assembly can therefore take place by one single person.
- Efficient and effortless assembly whilst achieving consistent precision at the same time.

Pressomat 100:

Individual Moovit drawer components are inserted and clamped prior to **fixing with screws** using this model.

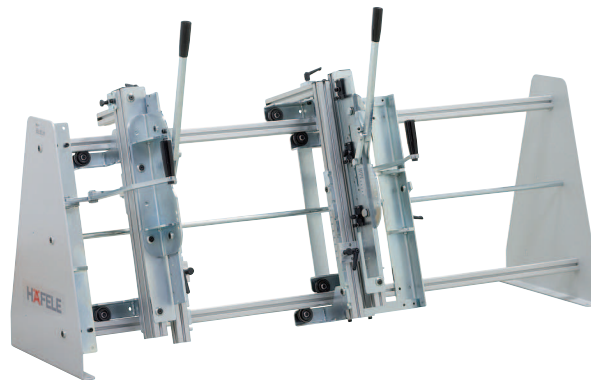
Pressomat 200:

The fixing claws of the drawer sides are additionally **pressed** into the drawer base using this model.

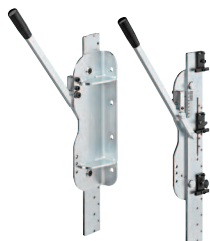
5



Pressomat 100,
for screw fixing of drawer bases



Pressomat 200,
for pressing fixing claws into drawer bases;
Picture shows model with extension



Optional press-fit tools for Pressomat 100,
for retrofitting

- Area of application: For assembling Moovit drawers and front extensions of all Moovit drawer side heights
- Material: Steel
- Finish: Galvanized
- Width: For drawers variably adjustable up to max. 1,200 mm

Note

The Pressomat **must** be screwed to a robust and stable work table.

A detailed **processing film** and **operating instructions** can be found in our "e@sylink" online catalogue under the specified catalogue numbers.

	Dimensions (W x D x H) mm	Cat. No.
Pressomat 100		
For screw fixing	(1160 – 1770) x 720 x 810	553.69.003
Retrofitting set, for retrofitting the press-fit function	340 x 150 x 1030	553.69.007
Pressomat 200		
With press-fit function for fixing claws	(1160 – 1770) x 720 x 1200	553.69.004

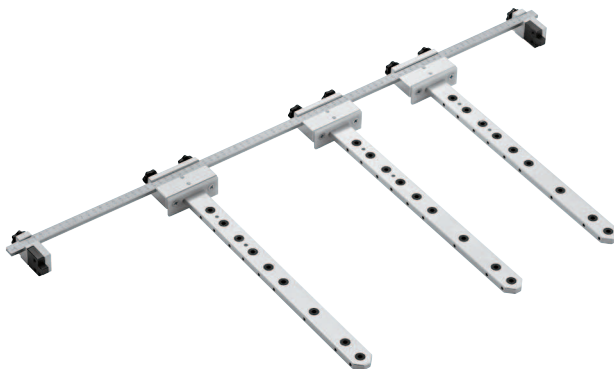
Packing: 1 piece

Order reference

The extension is a component of both Pressomat models.

TCH-F-INT 2008, HDE-en, 09/08; Dimensional data not binding. We reserve the right to alter specifications without notice.

→ Moovit Drawer guide locating tool



- Material: Aluminium, drill guides: Steel
- Area of application: For precise pre-drilling series drilled holes for Moovit runner system, before or after cabinet assembly, for overlay and inset conditions
- Features: Adjusting facility for height and depth with scale, removable drill guides for optional use of depth gauge
- Version: With 5 mm drill guides for Varianta screws
- Length: Rail 860 mm, arm 420 mm
- Weight: 2.5 kg

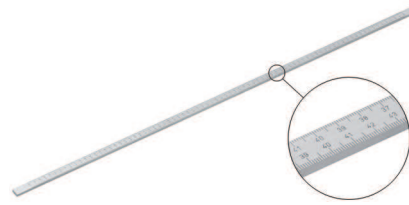
Supplied with

- 1 Ruler
- 3 Arms
- 2 Stoppers

	Cat. No.
Moovit drawer guide locating tool	553.69.030

Packing: 1 piece

Moovit Locating ruler



- Material: Steel, galvanized
- Area of application: As guide rail for one Moovit drawer side locating tool
- Version: With millimetre scale
- Length: 860 mm

	Cat. No.
Moovit locating ruler	553.69.032

Packing: 1 piece

Moovit Drilling jig for cabinet rail

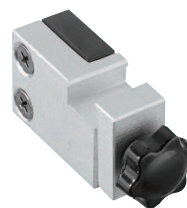


- Material: Aluminium, drill guides: Steel
- Area of application: Individual drilling jig for Moovit drawers or for Moovit drawer side locating tool
- Features: Depth adjustment in several steps, removable drill guides for use of depth gauge
- Length: 420 mm

	Cat. No.
Moovit drilling jig for cabinet rail	553.69.033

Packing: 1 piece

Moovit Stopper for drawer guide locating tool



- Material: Aluminium
- Area of application: For Moovit locating ruler as top and bottom stop for use on panels or cabinets
- Features: Height adjustable

Note

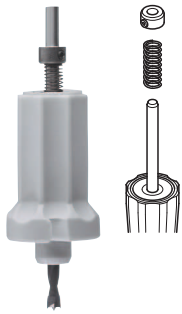
Two stoppers are required for fixing the Moovit locating ruler vertically.

	Cat. No.
Moovit stopper for drawer side locating tool	553.69.034

Packing: 1 piece

Depth gauge

Suitable for Moovit drawer guide locating tool



Inserting drill bit in depth gauge

- Insert drill bit in depth gauge
- Push the spiral spring and stop ring over the shank of the drill bit
- Set drilling depth by adjusting stop ring after trial operation

- Area of application: For drill bits with Ø 5 mm shank and min. length of 107.5 mm
- Version: With 2 ball bearings

Supplied with

- 1 Depth gauge
- 1 Stop ring, internal Ø 5 mm
- 1 Spiral spring
- 1 Allen key

	Cat. No.
Depth gauge	001.28.710

Packing: 1 piece

Order reference

Please order multi-spur drill bit for depth gauge separately.

Multi-spur drill bit for depth gauge

- Material: HSS
- Version: Special drill bit for depth gauge, HM-tipped

Drill bit Ø mm	Length mm	Cat. No.
5	107.5	001.24.434

Packing: 1 piece

→ Insertion tool

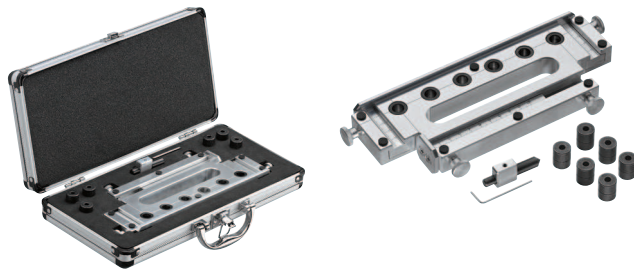
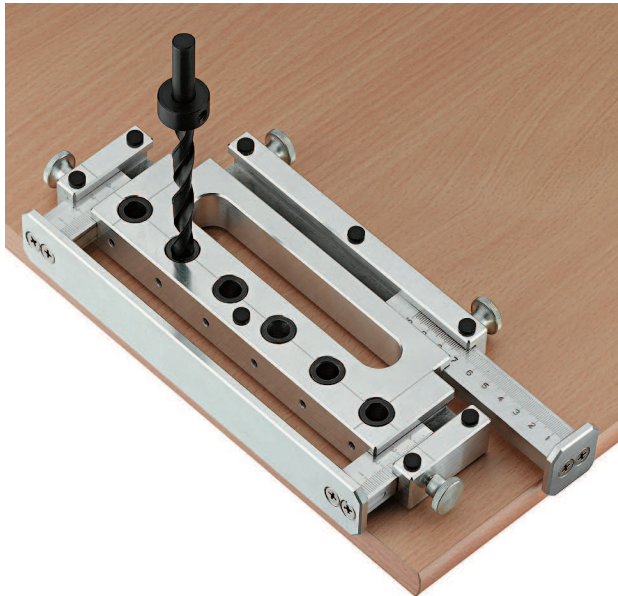


- Material: Aluminium
- Finish: Silver coloured anodized
- Area of application: Moovit fix front fixing of drawers and internal extensions
- Features: For press fitting or knocking in

	Cat. No.
Insertion tool	553.69.020

Packing: 1 piece

→ Moovit Drilling jig for front panels



- Material: Aluminium, drill guides: Steel
- Area of application: For precise pre-drilling or marking series drilled holes for fixing the Moovit front panel
- Features: With millimetre scale, width adjustable 40 mm, height adjustable 100 mm
- Version: With 5 mm drill guides for Varianta screws, with 10 mm drill guides for dowels or centre punching the drilling position
- Dim. (L x W x H): 262 x 105 x 30 mm
- Weight: 1 kg

Supplied with

- 1 Moovit Drilling jig for front panels
- 1 Centre punch
- 6 Drill guides for drill bits with hole Ø 5 mm
- 6 Drill guides for drill bits with hole Ø 10 mm
- 1 Allen key
- 1 Case

	Cat. No.
Moovit drilling jig for front panels	553.69.031

Packing: 1 piece

→ Accessories for Moovit drilling jigs

HSS Twist drill bit



- Material: HSS
- Standard: DIN 338

Diameter mm	Cat. No.
5.0	001.41.168
10.0	001.41.293

Packing: 10 pieces

Stop ring



- Material: Steel
- Area of application: For twist drill bit

Internal Ø mm	External Ø mm	Cat. No.
5	10	001.42.665
10	23	001.42.693

Packing: 1 piece

TCH-F-INT 2008, HDE-en, 09/08; Dimensional data not binding. We reserve the right to alter specifications without notice.